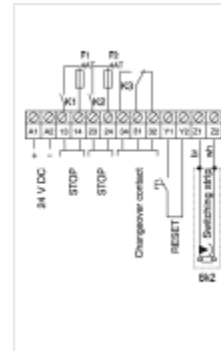


HOUSING TYPE C

	Article no.	3004.5246
	Type	452.46
Performance Level according to EN ISO 13849-1:2008	e / Category 3	
Safety Integrity Level (SIL) according to EN 62061:2005	3	
Functions Input	1 switching strip	
Functions Output	1 output with 2 relays each with 1 NC contact in series, forced	
Additional functions	Changeover contact; Reset	
Supply voltage A1 – A2	24 V DC	
Rated power	3 VA	
Power pack potential-isolated	yes	
Relay contacts 13 – 14; 21 – 24 max. switching voltage AC/DC	250 V/24 V	
Relay contacts 13 – 14; 21 – 24 max. switching current AC/DC	4 A/2 A	
Perm. operating temperature	-20..+55 °C	
Housing Dimensions (W x H x D) in mm	22.5 x 100 x 110	
Degree of protection for housing/contacts	IP 20	
Weight	175 g	
Tests	EN ISO 13849-1:2008, EN 62061:2005	



Wiring diagram

Products Switchgear Housing type C Housing type C: 3004.5246