

Control and Monitoring device

24Vdc → EE03/C-1-0

115V~ → EE03/C-1-1

230V~ → EE03/C-1-2

450.500.000

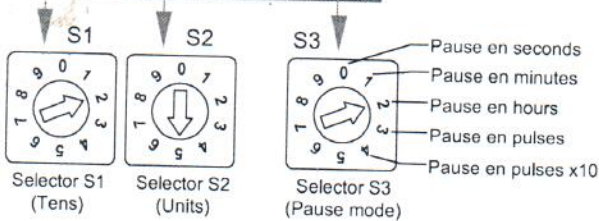
-TIME OR PULSES-

-PAUSE time programmable via the selector by time or pulses (electrical signals emitted during a machine's working rhythm)

-OPERATION time: pressure switch signal + 10 seconds.
 Depends on the flow and number of points in the installation.
 A maximum duration of 3 minutes has been set, after which the alarm will be activated.

Configuring the device:

- Select the desired pause mode via selector S3: Time / Pulses.
- Select the value of this pause via selectors S1 and S2 (Tens and Units)



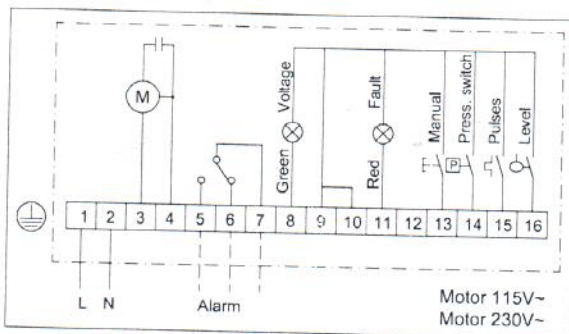
Application examples:

S1	S2	S3	One lubrication cycle every:
9	0	0	90 seconds
3	5	1	35 minutes
0	1	2	1 hour
8	0	3	80 pulses
7	5	4	75 pulses(x10)=750 pulses

Monitoring system

If the alarm is activated during start-up, the red led will light up indicating the relevant fault:

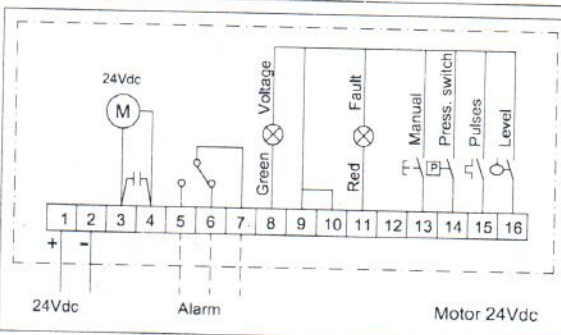
Type of alarm	Indicates	To cancel the fault
Fixed red led	1- Minimum level of oil in the tank 2- Level switch fault	-Fill the tank and press the manual pushbutton -Check the level switch
2 flashes of red led	Pressure fault (not enough pressure after motor in operation for 3 minutes)	-Check there are no leaks in the circuit -Check pressure switch status
3 flashes of red led	Device configuration fault	Check that -The pause mode selector is not out of range -The units and tens selectors are not at "0" at the same time



All the contacts on this diagram are indicated at rest position.

On the electrical level (tank without oil) the minimum level contact is activated by the float

- Electrical level ⇒ Tank without oil
- Pressure switch ⇒ Circuit without pressure
- Manual pushbutton ⇒ Not pressed



CAUTION!!!

Safety measures must be taken: disconnect the main switch before carrying out connection coupling.

