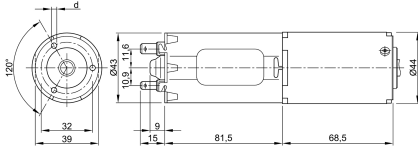


Design Data	
Commutation	brushed
Direction of rotation	bidirectional
Bearing Type	A:Sleeve - B:Sleeve

0231 A



Performance data		
Nominal Voltage [V]	U_N	24
Nominal Torque [Nm]	M_N	4,00
Nominal Speed [min^{-1}]	n_N	171,818
Nominal Power [W]	P_N	72,0
Nominal current [A]	I_N	7,0
Nominal force [kN]	F_N	0,00
Duty cycle		s3

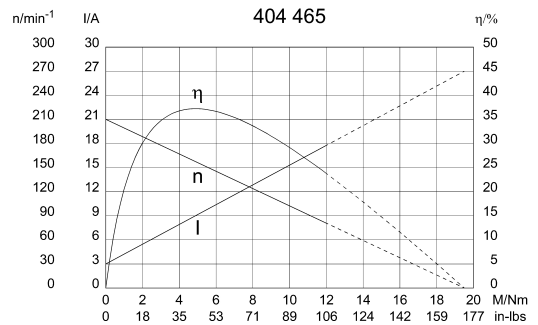
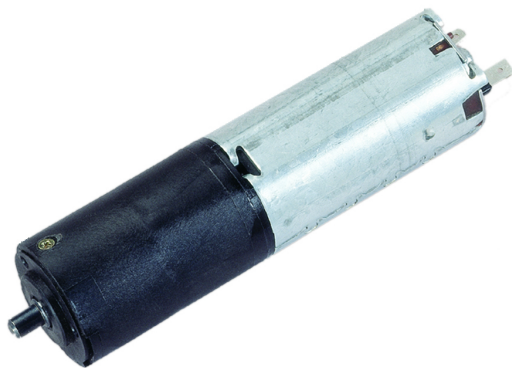
Sensor data	
Pulses	0
Output channels	0

Other data	
Gear ratio	39,7/1
Gear wheel material	plastic
Suppression components	7,5 μ H, 1nF
Enclosure class	IP30
Weight [kg]	0,630

Remarks:
d = 3,3mm, for selftapping screw 4mm (shape Remform)

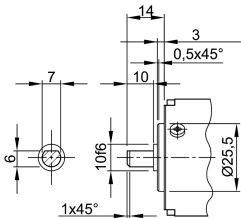
Characteristic Curves

Motor picture

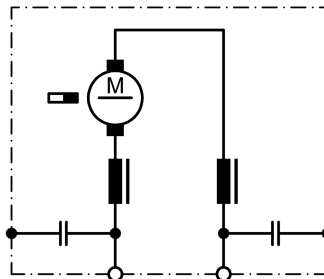


Output shaft drawing (W), Wiring diagrams (S) and Connector layout (K)

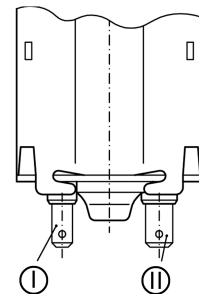
W 268



S 30



K 117



I Blade terminal ends 4,8 x 0,8 DIN 46 244
II Blade terminal ends 6,3 x 0,8 DIN 46 244