

NOTICE
 THIS DRAWING IS THE PROPERTY OF QUALITROL CORPORATION AND IS LOANED ONLY ON THE CONDITION THAT IT WILL BE USED TO FACILITATE THE PURPOSE FOR WHICH INTENDED AND NOT BE REPRODUCED, COPIED OR OTHERWISE DISPOSED OF, AND IS NOT TO BE USED IN WHOLE OR PART FOR FURNISHING INFORMATION RELATIVE TO THE MAKING OF DRAWINGS, PARTS, APPARATUS OR PARTS THEREOF, EXCEPT BY WRITTEN ORDER FROM QUALITROL CORPORATION.

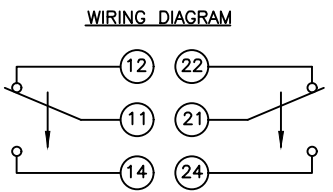
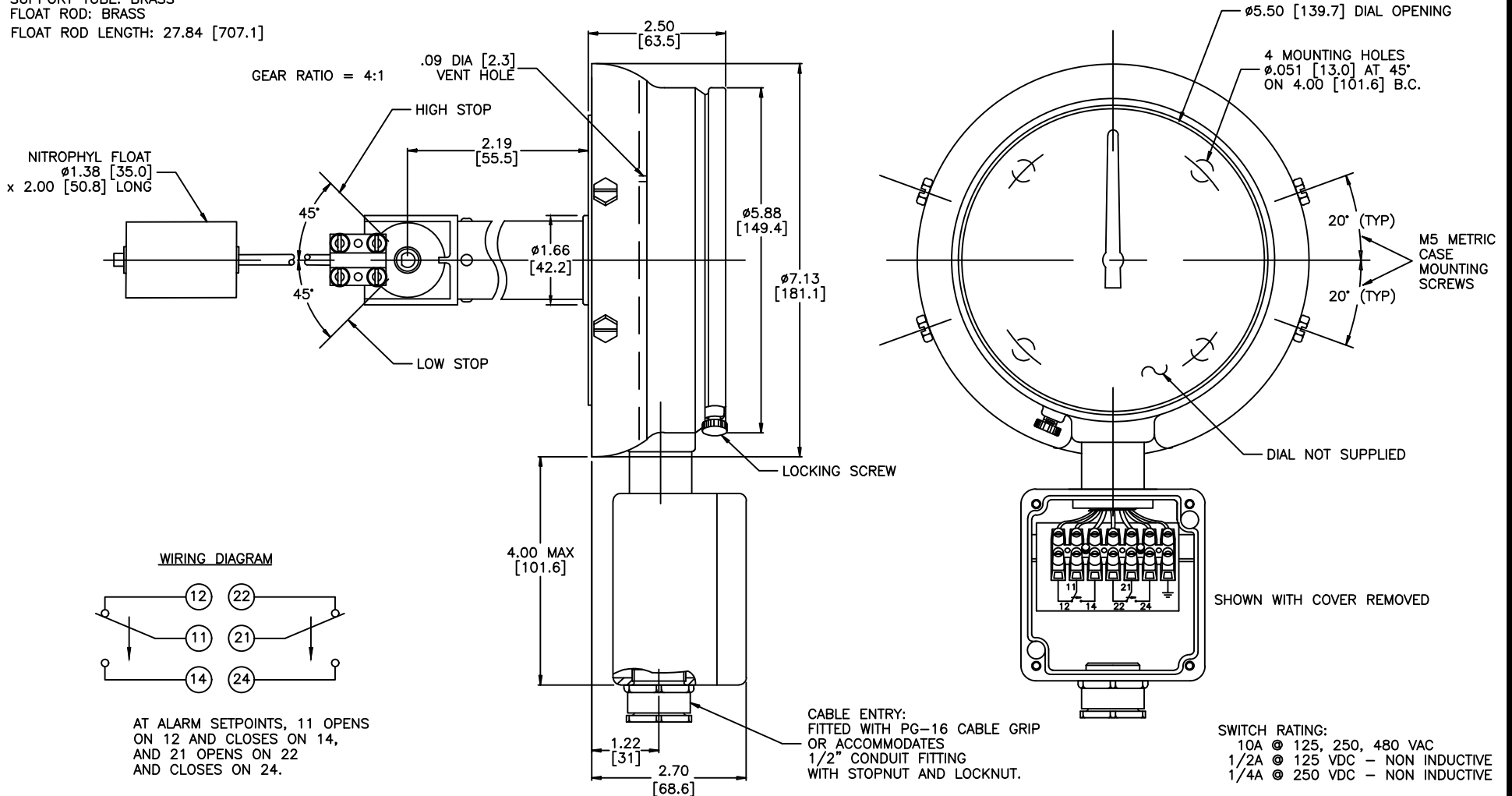
MODEL NO. 042-310-02

ALL DIMENSIONS FOR REFERENCE ONLY AND ARE IN INCHES [MILLIMETERS].
 CASE ASSEMBLY: FREE BREATHING
 DIAL: NOT SUPPLIED
 POINTER: YELLOW

LENS: POLYCARBONATE
 CASE: ALUMINUM, PAINTED ASA 70 LIGHT GRAY EPOXY
 FLANGE: ALUMINUM
 SUPPORT TUBE: BRASS
 FLOAT ROD: BRASS
 FLOAT ROD LENGTH: 27.84 [707.1]

- NOTES:
1. WHEN FLOAT ROD IS ON HORIZ. C.L., POINTER TO BE VERT. UPWARD AS SHOWN.
 2. MTG. SCREWS, LENS, HUB ASBY. POINTER, CASE MOUNTING SCREWS, FLOAT ROD, FLOAT ROD SCREWS AND UNASSEMBLED BRACKET ARE PACKAGED SEPARATELY.
 3. SWITCH IS NOT CALIBRATED TO FLOAT OR DIAL.

INSULATION TEST: 2000V TO GROUND FOR 60 SECONDS.
 "TOP" STAMPED ON FLANGE.



AT ALARM SETPOINTS, 11 OPENS ON 12 AND CLOSES ON 14, AND 21 OPENS ON 22 AND CLOSES ON 24.

-	8-27-02	CHANGED GEAR HOUSING	23093
-	3/21/01	REVISED VENTING	22032
-	01-10-01	ADD ADP-152-1 AND CHANGED CALLOUT	21813
LET	DATE	ALTERATION	C.N.

QUALITROL CORPORATION
 DIMENSIONS AND TOLERANCES IN ACCORDANCE WITH ASME Y14.5M-1994

PH. (585) 586-1515
 FAX (585) 377-0220
 1385 FAIRPORT ROAD
 FAIRPORT, NY 14450
 FORM 0-473 REV.D 10/22/02

TITLE: 6" LEVEL GAGE
 MODEL NO. 042-310-02