

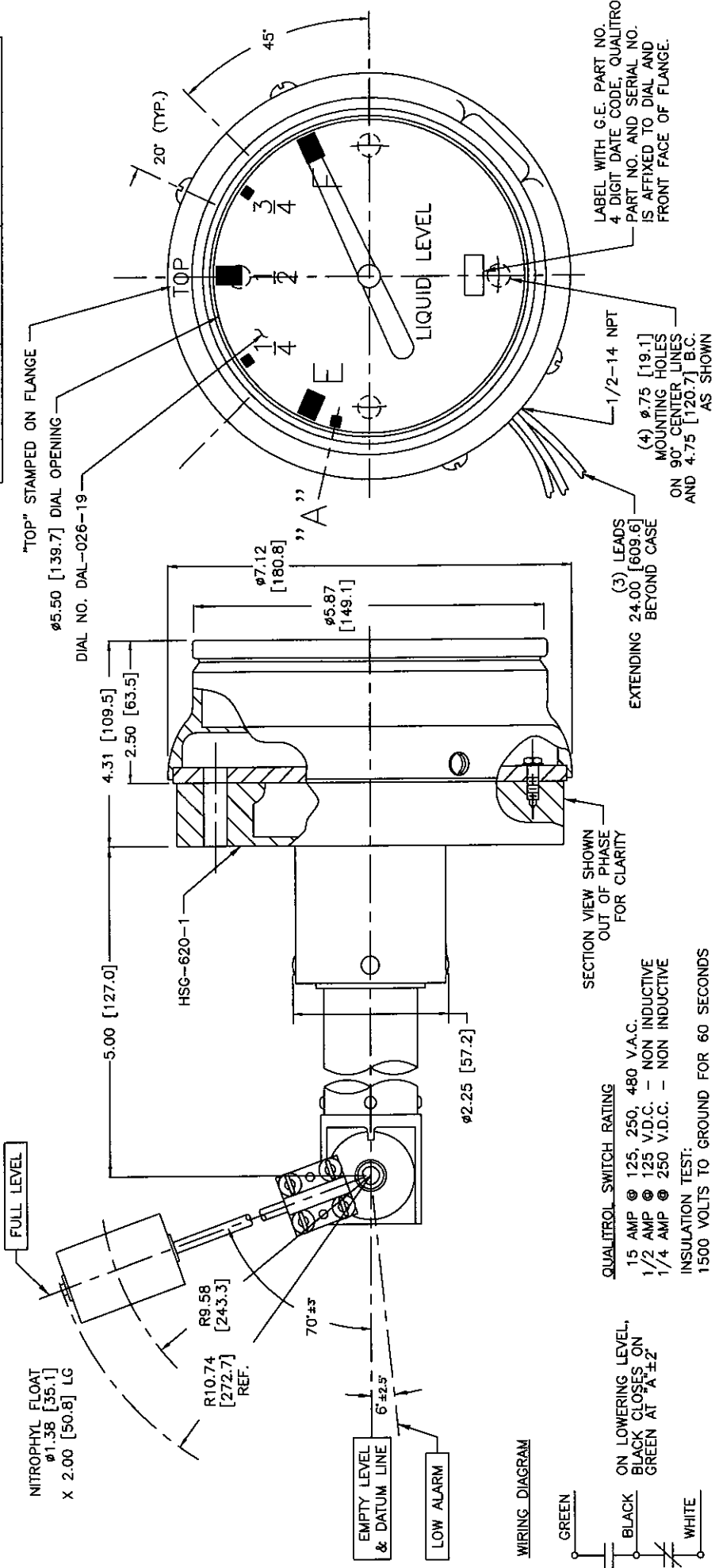
NOTICE
 THIS DRAWING IS THE PROPERTY OF QUALITROL CORPORATION AND IS LOANED ONLY ON THE CONDITION THAT IT BE USED TO FABRICATE THE PARTS SHOWN THEREON AND NOT BE REPRODUCED OR COPIED IN ANY MANNER WITHOUT THE WRITTEN PERMISSION OF QUALITROL CORPORATION. NO PART OR PARTS THEREOF, EXCEPT BY WRITTEN ORDER FROM QUALITROL CORPORATION.

MODEL NO. 045-60F

THIS UNIT IS DESIGNED IN ACCORDANCE WITH U.L. 1203 CLASS 1, GROUP D. FLOAT ROD ASSEMBLY TO BE SHIPPED UNASSEMBLED FROM UNIT. (PLACE SCREWS AND WASHERS IN BAG AND TAPE TO FLOAT ROD). POINTER AND SWITCH CALABRATIONS TO BE ESTABLISHED FROM DATUM LINE.

ALL DIMENSIONS FOR REFERENCE ONLY AND ARE IN INCHES [MILLIMETERS]
 CASE ASSEMBLY: MUST BE SEALED AGAINST DUST AND MOISTURE
 DIAL: BLACK CHARACTERS ON A WHITE BACKGROUND
 POINTER: BLACK
 LENS: UV STABILIZED ACRYLIC
 CASE: ALUMINUM, PAINTED ASA 70 LIGHT GRAY EPOXY
 FLANGE: ALUMINUM
 CUSTOMER PART NO. (25661072-24) TO BE MARKED ON OUTSIDE OF GAGE CARTON.
 GEAR RATIO = 2:1
 BEZEL: STN. STL.

REVISION	PART NO.	DESCRIPTION
23826	045-60F	COMPLETE GAGE
5-21-03	045-60F-2	CASE ASS'Y
23826	045-60F-3	FLANGE & DRIVE ASSY
5-21-03	045-60F-4	FLOAT ROD ASSY



QUALITROL
 CORPORATION
 DIMENSIONS AND TOLERANCES IN ACCORDANCE WITH ASME Y14.5M-1994

LET	DATE	ALTERATION	C.N.
-	5-21-03	CORRECTED CHARTED PART NUMBERS	23826
-	6-3-02	FLOAT GEARING CHANGED; REDRAWN ON CAD	22946
M	4-5-94	ADD -2, -3, -4 CALLOUTS	16307

PH. (716) 586-1515
 FAX (716) 377-0220
 1385 FAIRPORT ROAD
 FAIRPORT, NY 14450
 FORM 0-473 REV.C 7/1/97

TITLE: 6" LIQUID LEVEL GAGE FOR HAZARDOUS LOCATION

MODEL NO. 045-60F