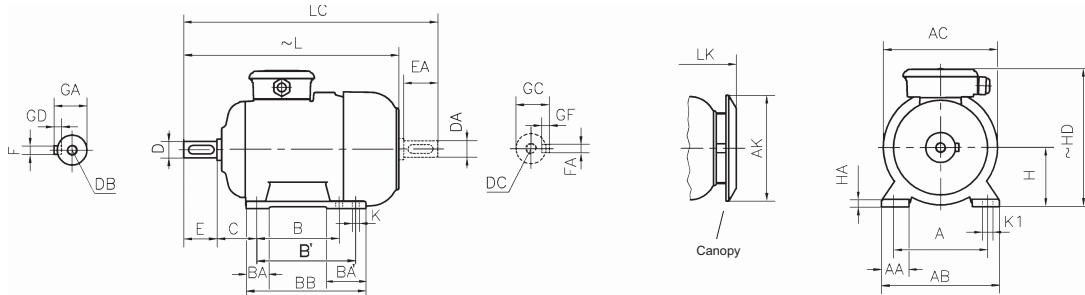


FOOT MOUNTED (B3) - CAST IRON HOUSING



Frame Size	Number of pole	Dimensions of foot mounted motors for mounting arrangements : B3, B6 ¹⁾ , B7 ¹⁾ , B8 ¹⁾ , B15, V5 ¹⁾ , V6 ¹⁾																														
		H	HD	HA	A	AA	AB	AC Ø	AK Ø	K Ø	B	B'	BA	BA'	BB	L	LC	LK	C	E EA	DB ²⁾ DC	D Ø DA	GA GC	FxGD FxGF								
132	S	132	300	15	216	52	260	257	239	12	140	-	46	84	218	493	579	530	89	80	M12	38	41	10X8								
	-										178																					
160	M	160	385	22	254	60	312	310	303	15	210	-	62	-	260	601	717	658	108	110	M16	42	45	12X8								
	-										254	304													645	761	702					
180	M	180	421	24	279	68	354	348	303	15	241	-	57	84	319	659	775	716	121	110	M16	48	51.5	14X9								
	-										279																					
200	L	200	475	26	318	80	398	390	370	19	305	-	68	-	355	747	865	803	133	110	M20	55	59	16X10								
225	S	4-8	225	510	30	356	82	438	434	370	19	286	-	76	-	346	795	943	851	140	M20	60	64	18X11								
	M	2										311	-									371	790	908	846	149	110	55	59	16X10		
	4-6-8	2										-	-									-	820	968	876	-	140	60	64	18X11		
250	M	2	250	572	35	406	80	484	480	440	24	349	-	75	-	410	895	1043	951	168	140	M20	60	64	18X11							
	4-6-8	2																				-	-	-	-	-	-	65	69	18X11		
280	S	2	280	630	40	457	120	550	544	440	24	368	-	85	128	474	958	1106	1014	190	140	M20	65	69	18X11							
	4-6-8	2																					-	-	-	-	-	-	75	79.5	20X12	
	M	2																					-	-	-	-	-	-	65	69	18X11	
	4-6-8	2																					-	-	-	-	-	-	75	79.5	20X12	
315	S	2	315	825	50	508	125	620	614	571	28	406	-	115	157	541	1120	1270	1197	216	140	M20	65	69	18X11							
	4-6-8	2															-	-	-				-	-	170	85	90	22X14				
	M	2															-	-	-				-	-	1120	1270	1197	140	65	69	18X11	
	4-6-8	2															-	-	-				-	-	1150	1330	1227	170	85	90	22X14	
	L	2															-	-	-				-	-	1120	1270	1197	140	65	69	18X11	
	4-6-8	2															-	-	-				-	-	1150	1330	1227	170	85	90	22X14	
355	M	2	355	990	50	610	140	740	732	571	28	560	-	130	182	732	1330	1510	1407	254	170	M20	80	85	22X14							
	4-6-8	2															-	-	-				-	-	1370	1590	1447	210	M24	100	106	28X16
	L	2															-	-	-				-	-	1330	1510	1407	170	M20	80	85	22X14
	4-6-8	2															-	-	-				-	-	1370	1590	1447	210	M24	100	106	28X16
400	L	2	400	1100	50	686	160	850	865	571	35	710	-	170	-	844	1560	1740	1637	280	170	M20	80	85	22X14							
	4-6-8	2															-	-	-				-	-	1600	1820	1677	210	M24	110	116	28X16
Tolerances																																

¹⁾ B6, B7, B8, V5 and V6 are up to frame size 315 M
²⁾ DB, DC : DIN 332-2 Form D

All dimensions in mm.