

Step by step

Installing cables.

Cable pulling systems for light and heavy duty cables.

A wide range of technical solutions for cable pulling is available. But depending on the application or cable type these can be very different. Our range offers solutions for light and heavy duty cables as well as for long straight pulling operations lateral / vertical bends or in hollow spaces.



*Ultra Tugger™:
Floor mount application ...*

- Fish tapes made of steel, nylon and fibreglass.
- Flat steel fish tape to fish under carpets.
- Cable caster for installation in hollow spaces and above suspended ceilings.
- Cable puller for heavy duty pulling operations.



*... and chain
mount set up.*

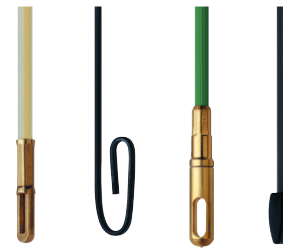
■ For long straight pulling operations and in bends.

Fish tapes made of steel, nylon and fibreglass.

- ▶ Depending on application available in various types for long straight pulling and in angled conduits.
- ▶ In lengths from 15 m to 76 m.
- ▶ In various diameters and dimensions.

Benefits:

- ▶ A suitable fish tape is available for every application. No improvisation needed you can make better use of your time.



■ Up through the ceiling: *Steel fish tape EZ Reach*



- ▶ Flat 7.5 m long steel fish tape for fishing under carpets and behind walls.
- ▶ Also capable of fishing under carpets.

Benefits:

- ▶ The tape profile allows straight pulls without twisting or kinking.
- ▶ Thin flat profile to fish easily under carpets.

■ Even faster, safer and lighter: *Magnum Pro™ fish tapes.*

- ▶ New grooved design with inspection hole and patented system.
- ▶ 360° standard comfort handle.

Benefits:

- ▶ Fatigue proof operations as well as lighter and faster pulling resp. coiling of the tape.



Fish tapes



■ Cable Caster™

- For quick and easy installation of cables in suspended ceilings

Characteristics

- Flashlight (option) can be simply mounted

Item	Part No.
Cable Caster™	50061860

Accessories	Part No.	Page
Replacement tips	50062590	568
Flashlight	50465007	568



■ Steel fish tape in winder case

Suitable for:

- pulling of cables over long distances
- Distances from 20 m, 38 m, 73 m
- Spare tapes without housing 30 m, 60 m

Characteristics

- Winder case eases cable pulling
- Dirt-free tape finish
- High impact nylon winder case with large handle grip

Item	Tape dimensions mm	Part No.
Steel fish tape in winder case 20 m	3.0 x 1.5	52041709
Steel fish tape in winder case 38 m	3.0 x 1.5	52041741
Steel fish tape in winder case 73 m	3.0 x 1.5	52041743
Steel fish tape in winder case 30 m	6.3 x 1.5	52041745
Steel replaceable fish tape without winder case 20 m	3.0 x 1.5	52044590
Steel replaceable fish tape without winder case 38 m	3.0 x 1.5	52044591
Steel replaceable fish tape without winder case 73 m	3.0 x 1.5	52044592
Steel fish tape without winder case 30 m	6.3 x 1.5	52044593
Steel fish tape without winder case 60 m	6.3 x 1.5	52044594

Accessories	Part No.	Page
Rotating pulling eye 3 mm	50293672	568

■ Silver Streak™ Fish tape

- Stainless, speed flex leader
- Slim pulling eye permits trouble-free pulling in long and winding conduits

Suitable for:

- Sections from 30 m or 60 m

Characteristics

- Can be used in conjunction with every steel fish tape with a tape dimension of 3.0 x 1.5 mm
- High impact nylon winder case with large handle grip

Item	Tape dimensions mm	Part No.
Silver Streak™ fish tape in winder case 30 m	3.0 x 1.5	52041746
Silver Streak™ Fish tapes in winder case 60 m	3.0 x 1.5	52041747
Speed Flex leader for fish tapes with tape dimension 3.0 x 1.5 mm	3.0 x 1.5	50143921



■ Nylon fish tape

- Non-conductive, non-coiling nylon tape

Suitable for:

- Large as well as small pipes
- Sections from 15 m or 30 m

Characteristics

- Diameter 4.8 mm
- High impact nylon winder case with large handle grip

Item	Diameter mm	Part No.
Nylon fish tape 15 m	4,8	52041750
Nylon fish tape 30 m	4,8	52041751
Flex-O-Twist™ Fish tape without winder case 30 m	4,8	52044597
Nylon fish tape without winder case 30 m	4,8	52044599



Accessories	Part No.	Page
Replacement tip	50016644	569



Fish tapes



■ Flex-O-Twist™ Fish tape in winder case

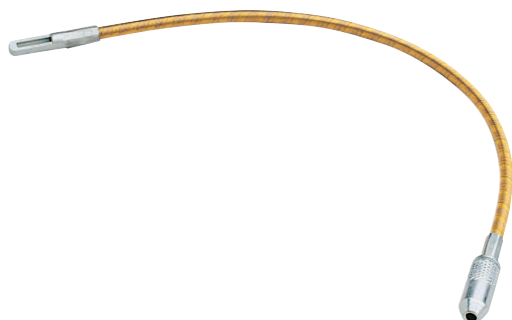
Suitable for:

- Sections from 15 m or 30 m

Characteristics

- Made of multi-strand steel cable
- Flexible type
- For quick and simple application
- High impact nylon winder case with large handle grip

Item	Diameter mm	Part No.
Flex-O-Twist™ Fish tape in winder case 15 m	4,8	52041748
Flex-O-Twist™ Fish tape in winder case 30 m	4,8	52041749
Flex-O-Twist™ Fish tape without winder case 30 m	4,8	52044597



■ Flex-O-Twist™ flexible fish tape leader

Characteristics

- Especially suitable for sharp bends
- Flexible fish tape leader

Item	Length	Part No.
Flex-O-Twist™ flexible fish tape leader	300 mm	50308599

■ **Fibreglass fish tape in winder case**

Suitable for:

- Data and telecommunication industry
- Pulling over distances from 15 m, 30 m, 45 m, 60 m, 76 m

Characteristics

- Non-conductive fibreglass tape with low friction coating
- To fish in small and large conduits even with wire or cable in place
- High impact nylon winder case with large handle grip



Item	Diameter mm	Part No.
Fibreglass fish tape in winder case 15 m	4,5	52041752
Fibreglass fish tape in winder case 30 m	4,5	52041753
Fibreglass fish tape in reel stand 45 m	4,8	50357450
Fibreglass fish tape in reel stand 60 m	4,8	50357468
Fibreglass fish tape in reel stand 76 m	4,8	50357476
Fibreglass fish tape without winder case 30 m	4,5	52044600

Accessories	Part No.	Page
Fibreglass fish tape accessory set	50357506	571
Pulling eye 3.0 mm	50359193	571
Pulling eye 4.8 mm	50359304	571

■ **Steel fish tape EZ Reach**

Characteristics

- With hand crank
- Flat steel tape for working above suspended ceilings, under carpets and through walls

Item	Tape dimensions mm	Part No.
Steel fish tape EZ Reach 7.5 m		50016962



■ Ultra Tugger™ cable puller 6800-22 CE



- Lightweight, portable cable puller
- Direct gear drive
- Tapered capstan and patented rope guide system for better control of the rope when feeding onto the capstan
- Force gauge for monitoring the max. pulling force of 3.6 t

Technical data	
Maximum pulling force:	3.6 t
Continuous output:	3 t
Pulling rate:	2.7 m/min at no load, 2.4 m/min at 900 kg load 2.3 m/min at 1,800 kg load 2.1 m/min at 2,700 kg load 1.8 m/min at 3,600 kg load
Dimension:	approx. 30 x 66 x 22 cm
Weight:	approx. 39 kg
Motor:	230 V, 50 Hz

Item	Part No.	
Ultra Tugger™ cable puller 6800-22 CE	50031961	
Scope of supply	Part No.	Page
Force gauge	50010697	
Floor-mount	50008650	

Accessories	Part No.	Page
-------------	----------	------

■ Rope for cable puller 6800-22 CE

Characteristics

- Breaking strength approx. 14.2 t
- Rope diameter 22 mm
- Rope on rope stand



Item	Part No.
Rope for cable puller 6800-22 CE 91 m long	50341367
Rope for cable puller 6800-22 CE 182 m long	50341375
Rope for cable puller 6800-22 CE 365 m long	50341383
Rope stand for ropes 91 and 182 m	50343629

■ **Tray type sheaves**

Characteristics

- Steel frames with forged hook 25 mm
- Sheaves from aluminium alloy with self-lubricating bearings
- Max. rated capacity 3.6 t
- For hooking

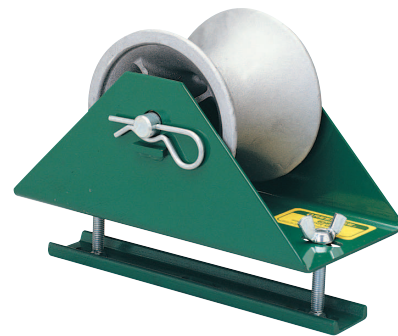


Item	Part No.	External diameter mm	Internal radius mm	Width mm	Weight: kg
Tray type sheaves 125 mm	50008722	300	100	125	12,0
Tray type sheaves 150 mm	50008730	460	180	150	20,0
Tray type sheaves 165 mm	50008749	600	250	165	30,0

■ **Cable tray roller**

Characteristics

- Sheaves from aluminium alloy
- Self-lubricating bearings
- Steel frames for mounting to cable ducts up to 50 mm thickness



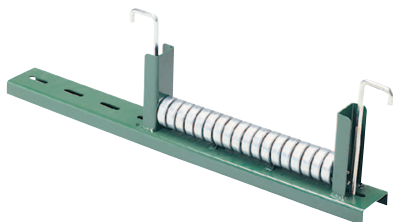
Item	Part No.	Length: mm	Width mm	Weight: kg
Cable tray rollers 125 mm	50153323	300	125	5,0
Cable tray rollers 125 mm	50190946	560	125	8,0



■ Cable tray roller

Characteristics

- Steel ball-bearings
- Steel frames
- Mounting slots
- Universal mounting brackets



Item	Part No.	Version	Width of cable conduit mm	Weight: kg
Cable tray rollers 300 - 450 mm	50273833	Straight	300 - 450	3.6
Cable tray rollers 500 - 600 mm	50273841	Straight	500 - 600	4.5
Cable tray rollers 600 - 760 mm	50273868	Straight	600 - 760	5.9
Cable tray rollers 300 - 450 mm	50273884	Radius	300 - 450	5.0
Cable tray rollers 500 - 600 mm	50273892	Radius	500 - 600	5.4
Cable tray rollers 600 - 760 mm	50273906	Radius	600 - 760	5.9

■ Cable Cream™ cable pulling lubricant

Characteristics

- Adheres well without dripping
- Easy to remove
- Won't break after exposure to heat or freezing cold
- Quality cream (yellow) for quick and easy application

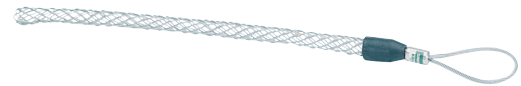


Item	Part No.
Cable Cream™ cable pulling lubricant 0.95 l	50352075
Cable Cream™ cable pulling lubricant 3.8 l	50352083

■ **Pulling grips Junior, closed**

Characteristics

- Single weave galvanized steel mesh with flexible pulling eye



Item	Part No.	Length of mesh mm	Eye length mm	Max. pulling force kN
Pulling grips, Junior, closed for cable diameters Ø 5 - 6 mm	50305964	110	83	0.3
Pulling grips, Junior, closed for cable diameters Ø 7 - 9 mm	50305840	110	83	0.4
Pulling grips, Junior, closed for cable diameters Ø 10 - 12 mm	50305867	180	96	0.8
Pulling grips, Junior, closed for cable diameters Ø 13 - 15 mm	50305883	220	110	1.1
Pulling grips, Junior, closed for cable diameters Ø 16 - 18 mm	50305905	255	130	1.7
Pulling grips, Junior, closed for cable diameters Ø 19 - 25 mm	50305921	255	146	2.4
Pulling grips, Junior, closed for cable diameters Ø 26 - 31 mm	50305948	300	165	3.4



Pulling grips

■ T-Basket type pulling grips, closed

Characteristics

- Double weave galvanized steel mesh with flexible pulling eye



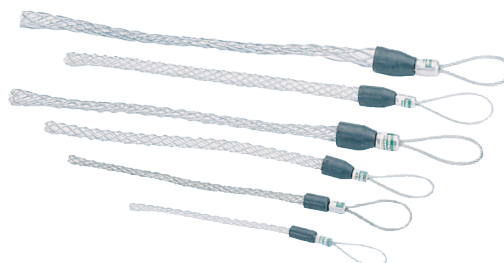
Item	Part No.	Length of mesh mm	Eye length mm	Max. pulling force kN
T-Basket type pulling grips closed for cable diameters Ø 13 - 15 mm	50305581	535	200	4.0
T-Basket type pulling grips closed for cable diameters Ø 16 - 18 mm	50305603	610	200	4.9
T-Basket type pulling grips closed for cable diameters 19 - 25 mm	50305620	610	230	6.0
T-Basket type pulling grips closed for cable diameters 26 - 38 mm	50305646	610	230	8.7
T-Basket type pulling grips closed for cable diameters 39 - 50 mm	50305662	610	280	14.5
T-Basket type pulling grips closed for cable diameters 51 - 63 mm	50305689	610	300	16.4
T-Basket type pulling grips closed for cable diameters 64 - 76 mm	50305700	610	300	21.7
T-Basket type pulling grips closed for cable diameters 77 - 88 mm	50305727	610	360	21.7
T-Basket type pulling grips closed for cable diameters 89 - 100 mm	50305743	660	360	27.5
T-Basket type pulling grips closed for cable diameters 19 - 25 mm	50305760	915	230	6.0
T-Basket type pulling grips closed for cable diameters 26 - 38 mm	50305786	915	230	8.7
T-Basket type pulling grips closed for cable diameters 39 - 50 mm	50310100	915	280	14.5
T-Basket type pulling grips closed for cable diameters 51 - 63 mm	50305808	915	300	16.4
T-Basket type pulling grips closed for cable diameters 64 - 76 mm	50310127	915	300	21.7
T-Basket type pulling grips closed for cable diameters 77 - 88 mm	50305824	915	360	21.7
T-Basket type pulling grips closed for cable diameters 89 - 100 mm	50310143	1020	360	27.5

■ Pulling grip set

Characteristics

- Set of the most important pulling grips for the most frequently required pulling operations

Item	Diameter mm	Part No.
Pulling grip set 50305840, 50305876, 50305883, 50305905, 50305921, 50305948	7-31 mm	50307584
Cable grip set 50305760, 50310100, 50305786	19-50 mm	50314823
Cable grip set 50305808, 50310100, 50310127	51-76 mm	50314831
Pulling grip set 50305760, 50305786, 50305808, 50310100, 50310127	19-76 mm	50314840



■ Pulling grip open

- Easy and straight pulls when the end of the conductor is not available

Characteristics

- Single woven galvanised steel netting mesh with bar closure
- Offset flexible eye



Item	Part No.	Length of mesh mm	Eye length mm	Max. pulling force kN
Pulling grip open, for cable diameters 13 - 15 mm	50306588	150	175	1.3
Pulling grip open, for cable diameters 16 - 18 mm	50310240	200	175	1.6
Pulling grip open, for cable diameters 19 - 25 mm	50306600	250	175	1.9
Pulling grip open, for cable diameters 26 - 31 mm	50310267	300	200	3.0
Pulling grip open, for cable diameters 32 - 38 mm	50306626	350	200	4.0
Pulling grip open, for cable diameters 39 - 44 mm	50310283	380	230	5.1
Pulling grip open, for cable diameters 45 - 50 mm	50306642	400	250	6.7
Pulling grip open, for cable diameters 51 - 63 mm	50310305	480	250	8.0
Pulling grip open, for cable diameters 64 - 76 mm	50306669	500	250	9.7
Pulling grip open, for cable diameters 77 - 88 mm	50310321	530	300	10.6
Pulling grip open, for cable diameters 89 - 100 mm	50306685	600	300	10.6

