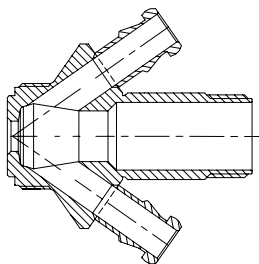
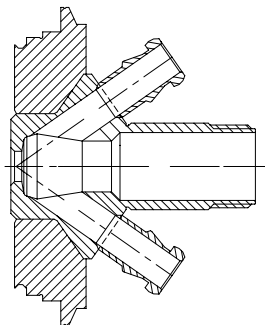


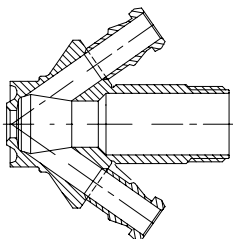
Valve body Type S  
Item no.: 850031



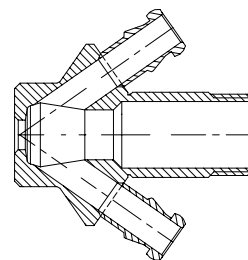
Valve body Type V  
Item no.: 850009



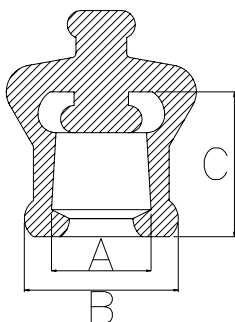
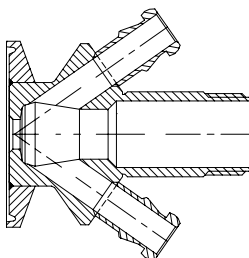
Valve body Type P  
Item no.: 850011



Valve body Type T  
Item no.: 850001



Valve body Type C  
Item no.: 850021



Where to use :	With W9 hose piece.	
<b>Material:</b>	EPDM	
Working temperature depends on choice of valve head.		
<b>Key measurements</b>		
Drawing part A:	Ø11 mm.	Ø0.43 In.
Drawing part B:	Ø17 mm.	Ø0.67 In.
Drawing part C:	16 mm.	0.63 In.
Net weight:	0.05 kg./pc	0.11lb
Working Pressure range:	0 - 3 bar(g)	0 - 43 psi(g)