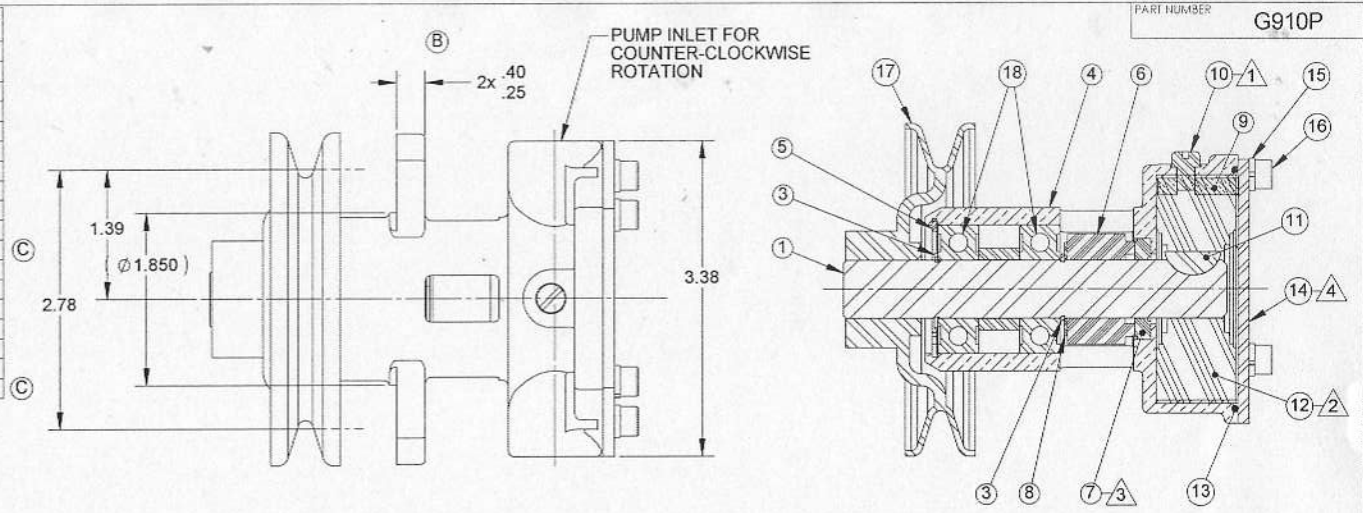
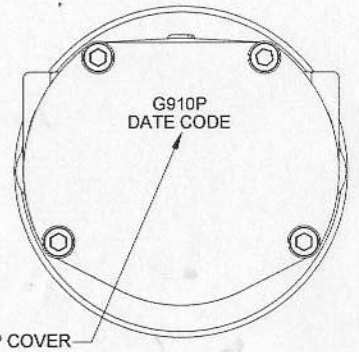
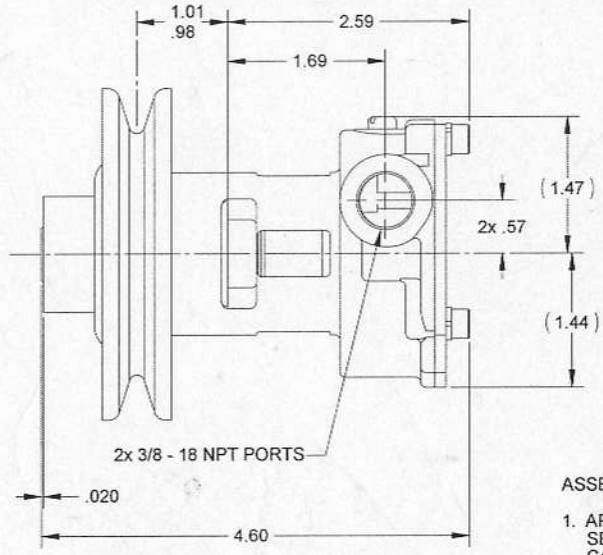
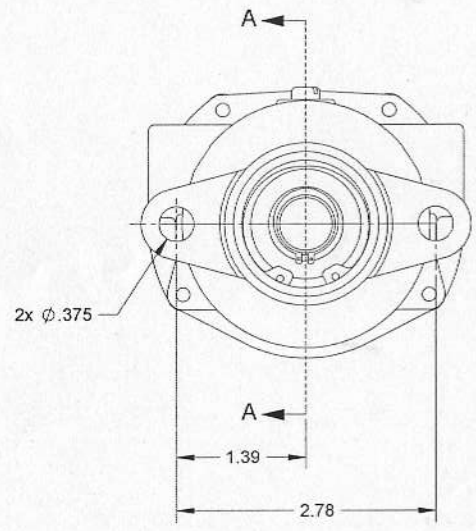


ITEM NO.	PART NUMBER	DESCRIPTION	Default/ QTY.
1	24569	SHAFT	1
2	21974	SPACER	1
3	4258	RETAINING RING	2
4	24627	HOUSING	1
5	4259	RETAINING RING	1
6	18035	MECHANICAL SEAL	1
7	10926	SEAL SEAT	1
8	04264	FLAT WASHER	1
9	18663	CAM	1
10	10195	CAM SCREW	1
11	18576	KEY, WOODRUFF	1
12	9000	RUBBER IMPELLER	1
13	19964	O-RING	1
14	24125	COVER PLATE	1
15	00343	LOCK WASHER	4
16	21916	SOCKET HD CAP SCREW	4
17	24589	PULLEY	1
18	12211	BALL BEARING	2



SECTION A-A



STAMP COVER

ASSEMBLY NOTES:

1. APPLY PERMATEX FORM-A GASKET NO. 1 (HARD SETTING) SEALANT, OR EQUIV. TO THREADS AND BASE OF HEAD TO CAM SCREW PRIOR TO INSTALLATION.
2. USE COOLANT TO AID IN INSTALLATION OF RUBBER IMPELLER.
3. USE PAC-EASE, OR EQUIV, WHEN INSTALLING MECHANICAL SEAL.
4. STAMP "G910P-01" AND DATE CODE ON COVER PLATE.
5. STATIC TEST PUMP TO 20 PSI.

		<b>HYPRO</b> Pumps & Water		375 Fifth Avenue NW New Brighton, MN 55112 (651) 756-6300		EXPERIMENTAL PART NO.		REV.
		DRAWING BASED ON ASME Y14.5M-1994		DO NOT SCALE PRINT		ENGRG REL: 5125 DATE: 09-13-05		
		THIRD ANGLE PROJECTION		SCALE 1:1		DWG BY: FLA DATE: 07-11-05		
		PART DESCRIPTION		IMPELLER PUMP		PART NUMBER		G910P
		REV. ECN		REVISION DESCRIPTION		CHKD		DATE
C	5817	18576 KEY WAS 13777, 12211 BEARING WAS 23448		DV	08-07-06			
B	5518	REMOVED .06 .25/40 WAS .31		DV	03-15-06			
A	5125	RELEASE TO PRODUCTION		DV	09-13-05			
		PART NUMBER		G910P		REV.		C