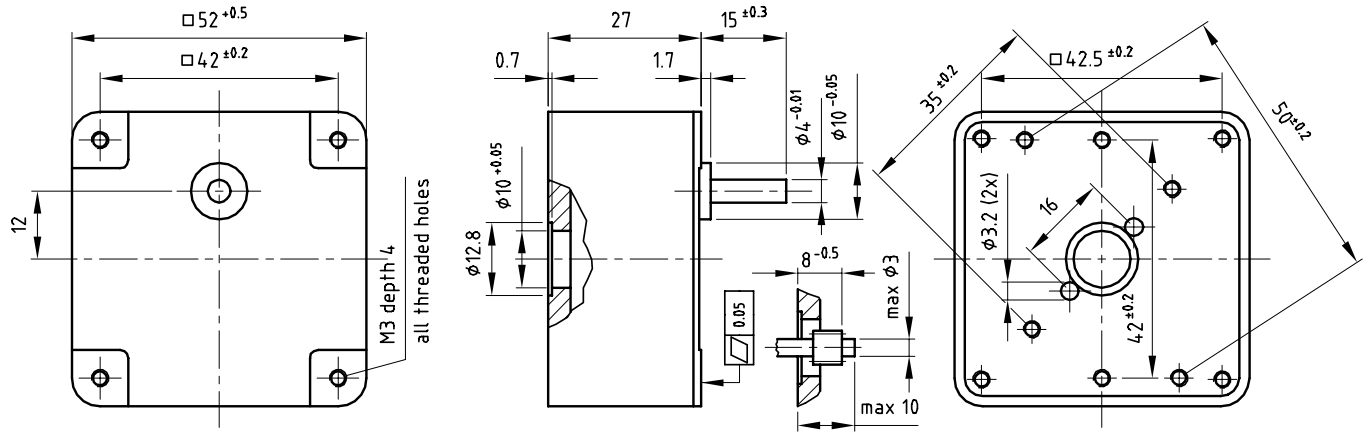


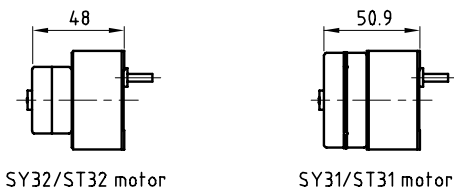
Dimensional drawing



Gearbox data

Gearbox Order number	Ratio	Exact ratio	Number of stages	Efficiency [%]	Maximum torque continuous [Nm]	Maximum torque intermittent [Nm]	Direction of rotation w.r.t. motor
S52A0004AA	4:1	4.17:1	2	80	0.1	0.2	=
S52A0006AA	6:1	6.25:1	3	73	0.2	0.3	≠
S52A0008AA	8:1	8.33:1	2	80	0.3	0.4	=
S52A0010AA	10:1	10:1	3	73	0.3	0.5	≠
S52A0012AA	12:1	12.5:1	2	80	0.4	0.6	=
S52A0017AA	17:1	16.67:1	2	80	0.5	0.8	=
S52A0020AA	20:1	20:1	3	73	0.6	0.8	≠
S52A0025AA	25:1	25:1	3	73	0.7	1.0	≠
S52A0033AA	33:1	33.33:1	3	73	0.7	1.0	≠
S52A0042AA	42:1	41.67:1	3	73	0.7	1.0	≠
S52A0050AA	50:1	50:1	3	73	0.7	1.0	≠
S52A0062AA	62:1	62.5:1	3	73	0.7	1.0	≠
S52A0083AA	83:1	83.33:1	3	73	0.7	1.0	≠
S52A0100AA	100:1	100:1	4	65	0.7	1.0	=
S52A0125AA	125:1	125:1	4	65	0.7	1.0	=
S52A0166AA	166:1	166.67:1	4	65	0.7	1.0	=
S52A0250AA	250:1	250:1	4	65	0.7	1.0	=
S52A0375AA	375:1	375:1	5	59	0.7	1.0	≠
S52A0500AA	500:1	500:1	5	59	0.7	1.0	≠
S52A0750AA	750:1	750:1	5	59	0.7	1.0	≠
S52A1000AA	1000:1	1000:1	5	59	0.7	1.0	≠
S52A1250AA	1250:1	1250:1	5	59	0.7	1.0	≠
S52A5000AA	5000:1	5000:1	6	53	0.7	1.0	=
S52A15XKAA	15000:1	15000:1	7	48	0.7	1.0	≠

Product combinations



SY32/ST32 motor

SY31/ST31 motor

Order number of motor/gearbox :

Last 6 digits of motor number + gearbox number

General data

* Bearing on output shaft	sleeve	
* Maximum radial load	50	N
* Maximum axial load	20	N
* Backlash at nominal load		°
* Max. recommended input speed	500	rpm
* Temperature range	-5/+60	°C

Options

- * Custom ratios
- * Custom shafts
- * Ball bearings on output shaft

PREMOTEC

PRECISION MOTOR TECHNOLOGY BV

Precision Motor Technology b.v. - Kerkeplaat 16 - 3313 LC - Dordrecht - The Netherlands - Tel.: +31 78 621 99 40 - Fax.: +31 78 621 48 28

2000-03-07 / subject to change

Internet : www.premotec.com - E-mail : sales@premotec.com