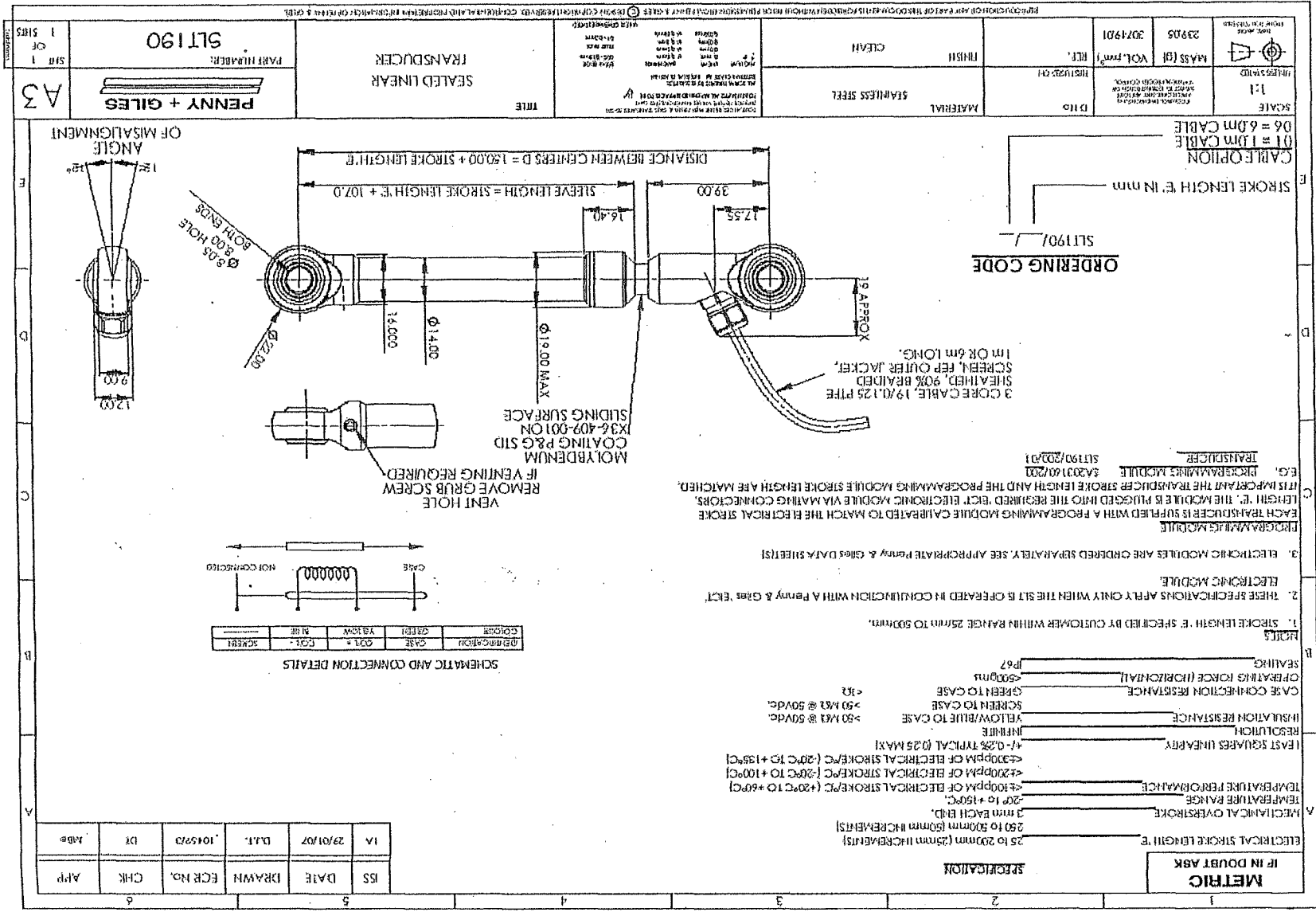


SLT 180/0300/B/06 KX 89740



SCALE	1:1	PROVIDED FOR THE USER'S INFORMATION ONLY. THE USER SHALL BE RESPONSIBLE FOR THE CORRECT USE OF THE DRAWING.
PROJ. NO.	23905	REV. 01
DATE	30/11/01	REV. 01
MATERIAL	STAINLESS STEEL	REV. 01
FINISH	CLEAR	REV. 01
TITLE	SEALED LINEAR TRANSDUCER	REV. 01
PART NUMBER	SLT190	REV. 01
SHEET NO.	1	REV. 01
SHEET TOTAL	1	REV. 01

1	IF IN DOUBT ASK	25 to 200mm (20mm increments)
2	ELECTRICAL STROKE LENGTH 'E'	250 to 500mm (50mm increments)
3	METCHANICAL OVERSTROKE	3 mm EACH END.
4	TEMPERATURE RANGE	-20° to +150°C.
5	TEMPERATURE PERFORMANCE	< 100ppm OF ELECTRICAL STROKE/C (+20°C TO +60°C) < 200ppm OF ELECTRICAL STROKE/C (-20°C TO +100°C) < 300ppm OF ELECTRICAL STROKE/C (-20°C TO +135°C)
6	RESOLUTION	INFINITE
7	INSULATION RESISTANCE	> 50 MΩ @ 50Vdc.
8	CASE CONNECTION RESISTANCE	> 50 MΩ @ 50Vdc.
9	OPERATING FORCE (HORIZONTAL)	< 500mN
10	SEALING	IP67

ISS	DATE	DRAWN	ECR NO.	CHK	APP.
1A	29/01/07	D.L.T.	1045213	D.T.	M.D.E.