



LOAD CELLS

pin load cells

PSPRN-PRX

Designed for measurement, weighing systems or overload protection for cranes

Double-ended shear beam

Made of stainless steel, with excellent resistance to shock and overload

On request:

Version "high temperature"

Version "custom made"

TECHNICAL CHARACTERISTICS PSPRN-PRX

Rated load (R.L.):	PRN from 500 to 4.000kg; PRX from 5.000 to 100.000kg
Combined error:	< ±0.1% of R.O.
Repeatability:	< ±0.02% of R.O.
Creep (20 minutes):	< ±0.03% of R.O.
Safe overload:	150% of R.L.
Ultimate overload:	300% R.L.
Recommended input:	5÷15 Vdc/ac
Input resistance:	350 ± 20 Ohm
Output resistance:	350 ± 5 Ohm
Insulation resistance:	> 5000 M Ohm
Rated output (R.O.):	1 ± 0.1% mV/V
Zero balance:	< ±2% of R.O.
Temperature range:	-20 ÷ +70°C
Compensated temperature range:	-10 ÷ +50°C
Temperature effect on zero balance:	< ±0.005% SN/°C
Temperature effect on output:	< ±0.005% sull'uscita/°C
Deflection:	0.4 mm
Degree of protection:	IP65
Material:	Stainless steel
Electrical connection:	6 conductors shielded cable; lenght 5 m

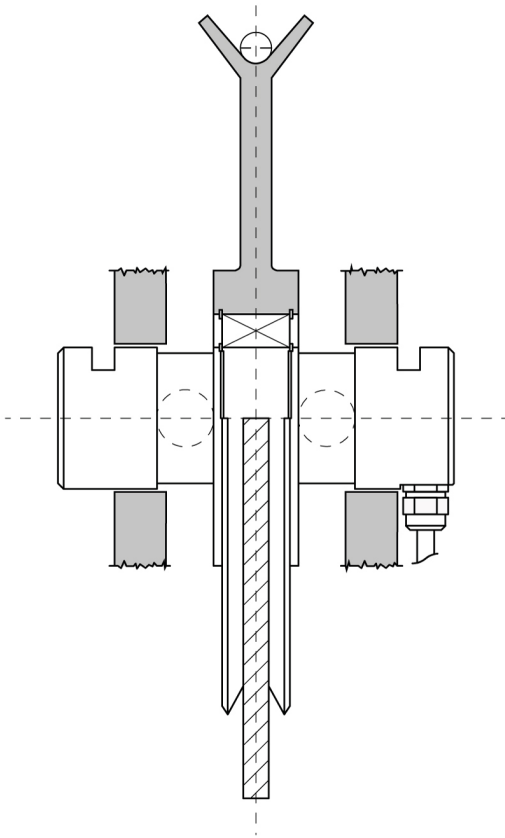




LOAD CELLS

pin load cells

PSPRN-PRX

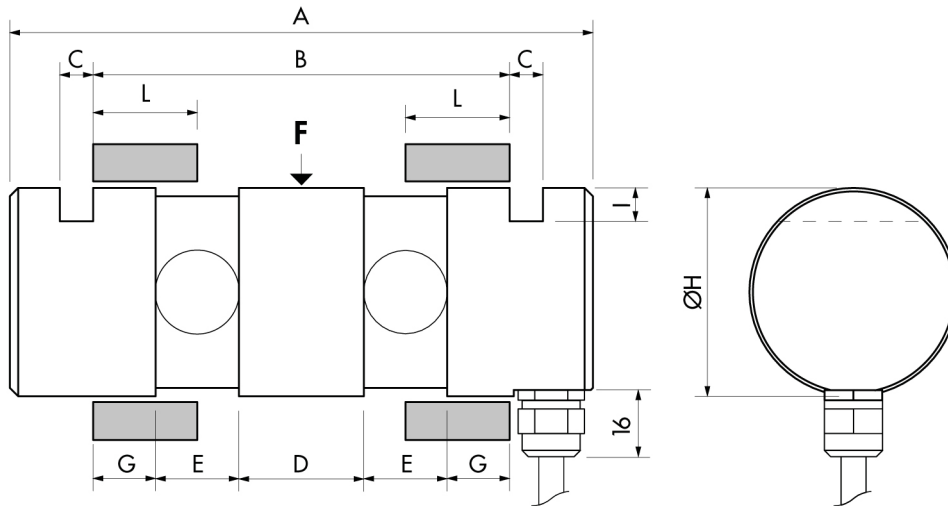




LOAD CELLS

pin load cells

PSPRN-PRX



MODEL	CAPACITY	A	B	C	D	E	G	ØH	I
PRN 500	500	116	80	6	20	20	10	30	6
PRN 1000	1000	116	80	6	20	20	10	30	6
PRN 2000	2000	116	80	6	20	20	10	30	6
PRN 4000	4000	116	80	6	20	20	10	30	6
PRX 5000	5000	140	100	8	30	20	15	50	8
PRX 10000	10000	140	100	8	30	20	15	50	8
PRX 20000	20000	140	100	8	30	20	15	50	8
PRX 40000	40000	290	220	20	100	30	30	80	15
PRX 60000	60000	290	220	20	100	30	30	80	15
PRX 80000	80000	305	235	20	115	30	30	100	15
PRX 100000	100000	305	235	20	115	30	30	100	15

